



<http://wiki.homerecz.com>

..... 1

..... 1

..... 1

..... 1

Lynx One 5

..... 5

..... 5

..... 5

..... 6

..... 6

..... 6

..... 6

..... 6

..... 6

..... 6

..... 9

..... 9

..... 9

..... 9

Lynx One

Lynx Studio Technology Lynx One

I/O

-
- **I/O: AES-EBU** (S/PDIF)
-
- **MIDI** : 2 **MIDI** 2 **MIDI**
-
-
- 가/ : 가/

- **PCI** : 7 **PCI**
- : 25 D-type 6
(**XLR**)
- **MIDI/** : 15 D-type
(**MIDI**)
- : 4 Lynx One
2
- : Crystal CS5360 **A-D** Crystal CS4390 **D-A** (50kHz
, I/O 96kHz)

- : Windows 95, 98, 2000, NT4 (Mac)

• **Lynx One Mixer:** , , , ,

- **MME** : Lynx One , Lynx One , Lynx One , Lynx One
- **MIDI** : Lynx One **MIDI** 1 2, Lynx One **MIDI** 1 2

- : , , 가
- : , 13.5MHz, 27MHz, , Word256 ()
- I/O: AES-EBU S/PDIF 가 ()
- : +4dBu -10dBV 가
- : , , 가

- :
- : 16 /44.1kHz -93.3dB, 24 /44.1kHz -106dB RMS

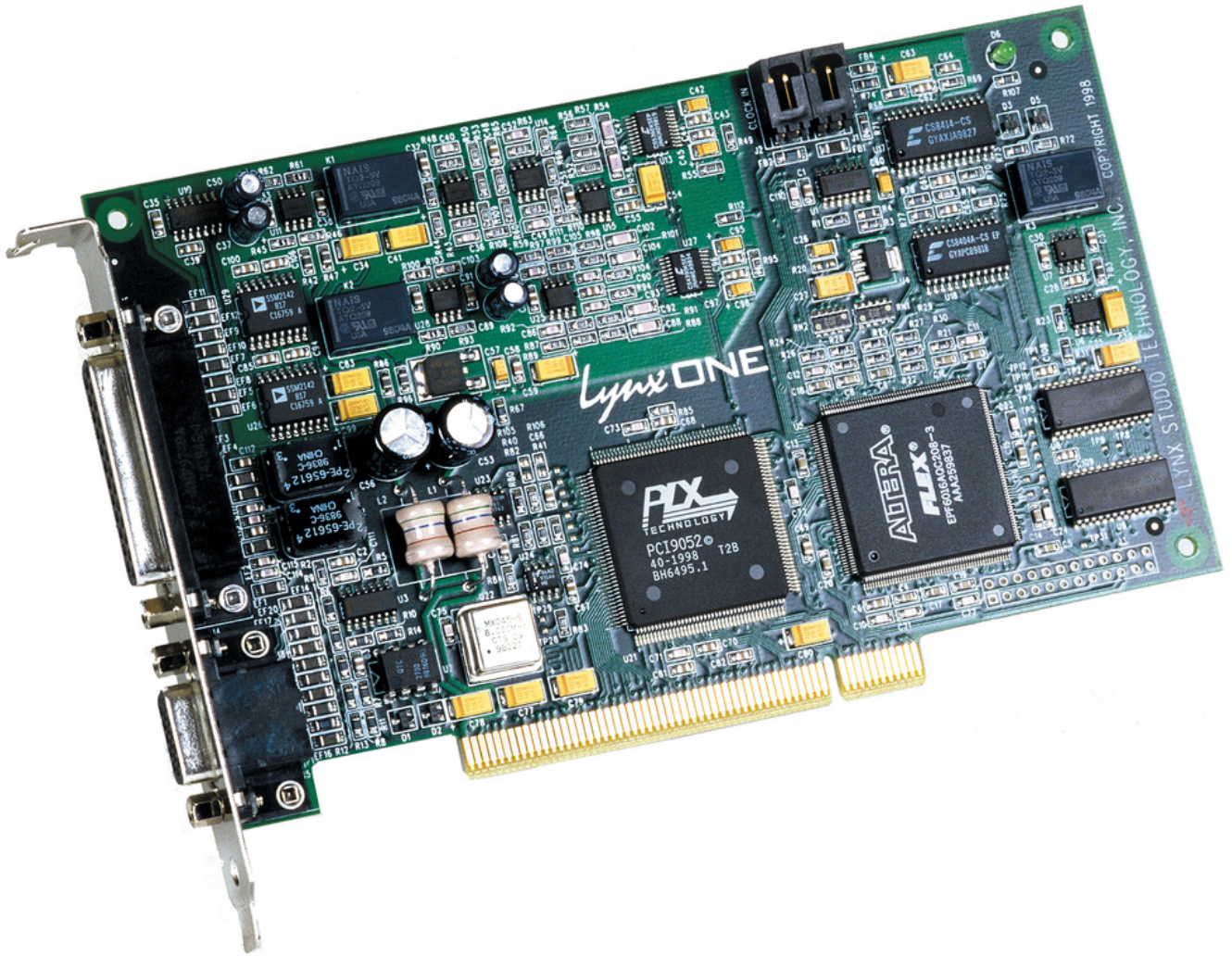
- AES-EBU I/O
-
-
-

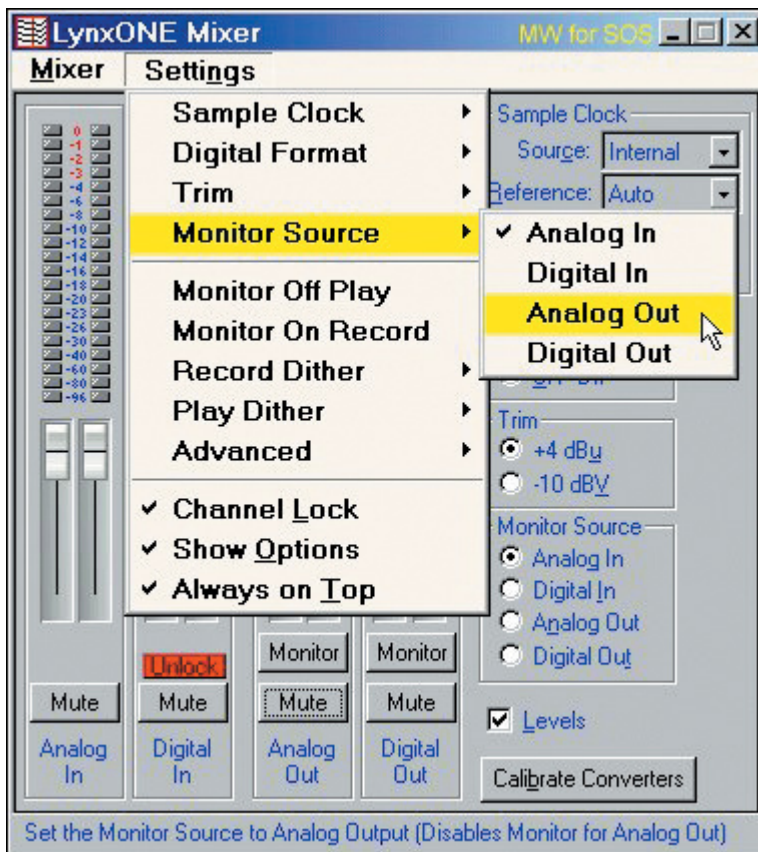
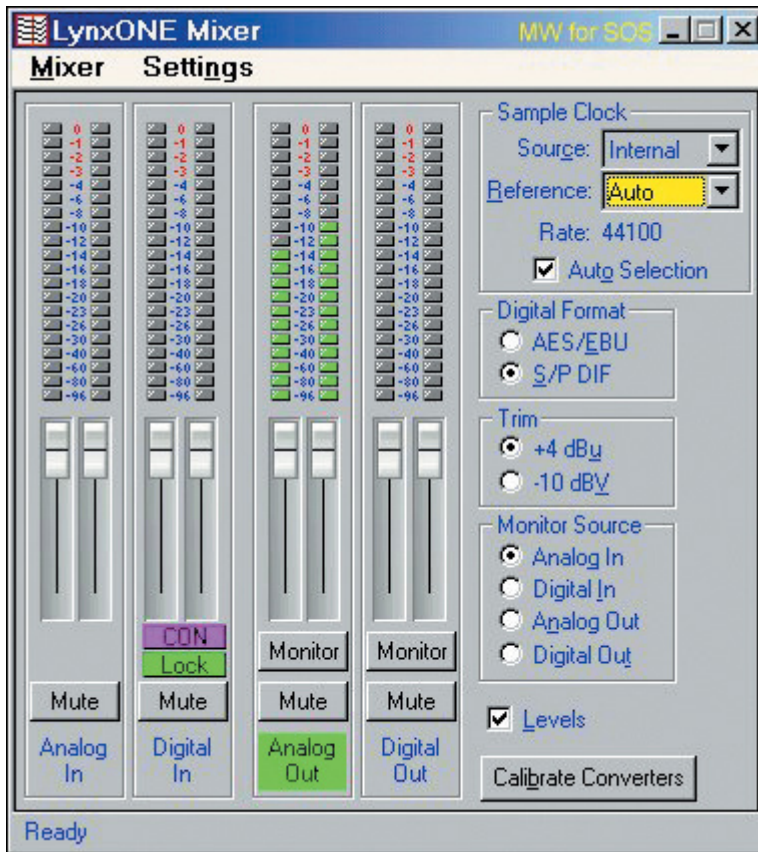
- 50kHz
- Mac
- Logic Audio 가

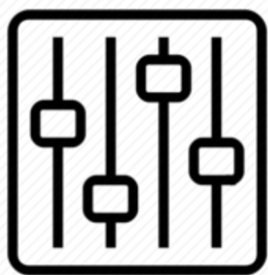
Lynx One

I/O

Mac







<http://wiki.homerecz.com>

From:
<https://wiki.homerecz.com/> -

Last update: **2025/04/08**

: (admin@homerecz.com)