



<http://wiki.homerecz.com>



---

- ..... 1
- ..... 1
- ..... 1
- ..... 1
- Merging Anubis** ..... 5
- ..... 5
- ..... 5
- ..... 5
- ..... 6
- ..... 6
- ..... 6
- ..... 6
- ..... 11
- ..... 11
- ..... 11
- ..... 11



# Merging Anubis

Merging Anubis      Merging Technologies  
 . Pyramix [DAW](#), Horus      Hapi      AoIP  
 Merging Technologies      Anubis      가

- :
  - Ravenna      가 (      256
  - ).
  - PC, Mac      Linux      [ASIO](#), Core Audio      ALSA      [DAW](#)
  - 가 .
  - [AES67/SMPTE ST2110](#)      ,      가 .
  - [Dante](#)      가 (      ).

• **Music Mission:**

- 
- 
- 48      (      )
- HORUS, HAPI      Peering

• **Monitor Mission:**

- 

- : 200 x 40 x 128 mm (      ), 950g
- :
- :      ,      ,
- :
  - (      )
  - 
  - [AES/EBU](#)      [S/PDIF](#)
  - [ADAT](#)

• **ANEMAN:** 가 .

• **MTDiscovery:** Ravenna .

- : Chrome      Firefox      가 .

• **UNITE:** 가

- 
- 
- (RAVENNA/AES67 )
- Peering (HORUS, HAPI)
- 

- [Thunderbolt](#)

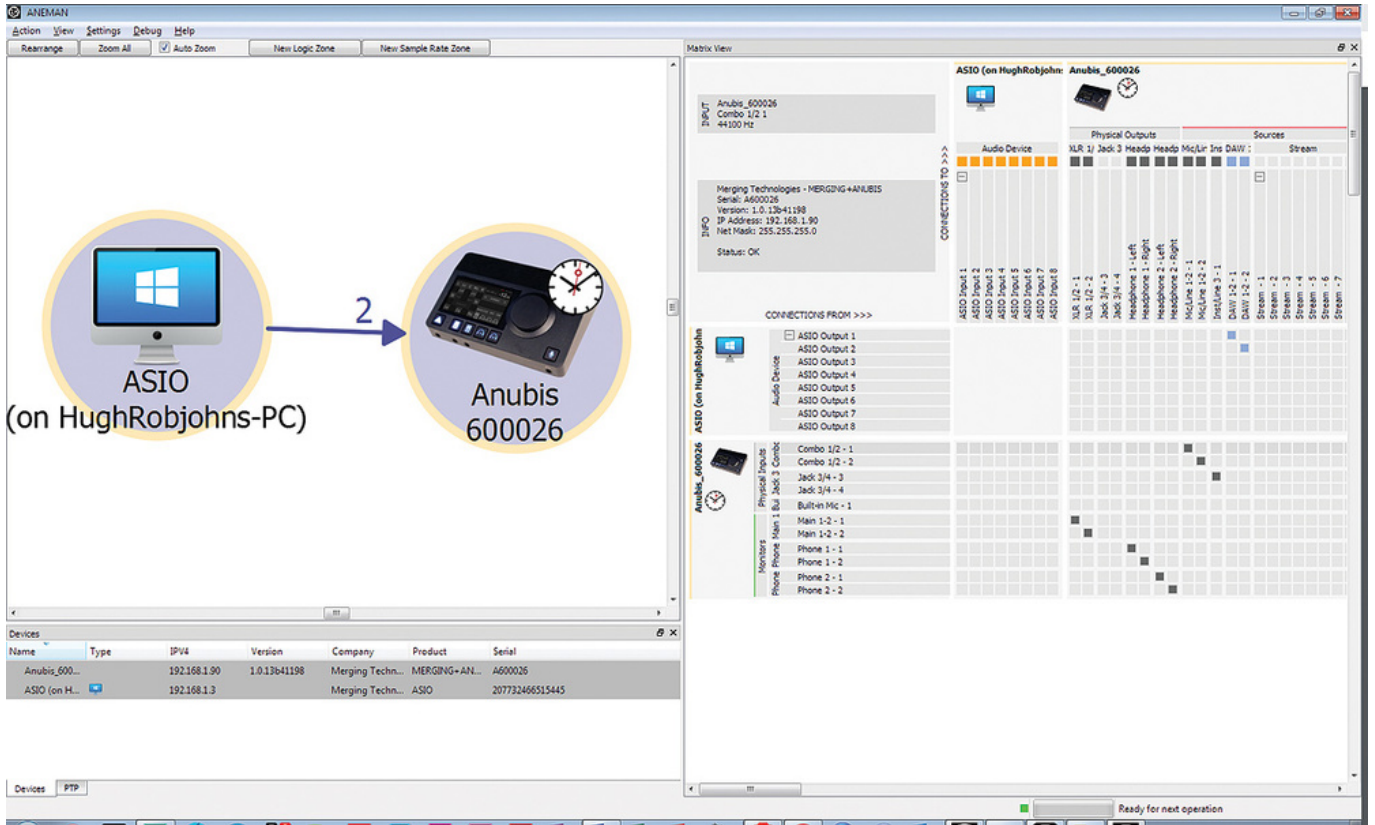
- **Pro:** 192kHz
- **Premium:** 384kHz , [DXD \(352.8kHz\)](#) DSD256

Merging Anubis

Music Mission  
, Monitor Mission

- <https://www.soundonsound.com/reviews/merging-anubis-music-mission>
- <https://www.soundonsound.com/reviews/merginganubis>

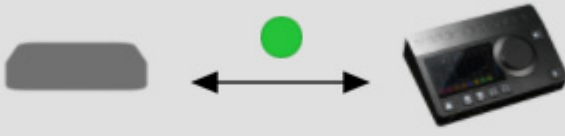






Merging RAVENNA/AES67 Settings Search


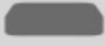
**UNITE** RAV/AES67



VAD is united with Anubis\_610087

Status: Running  
Sample Rate: 48000 Hz  
PTP: Locked

Online RAVENNA Devices:



Sams-MacBook- Anubis\_610087

Network Adapter

Interface: Thunderbolt Ethernet (en6: 169.254.70.212)  Auto

Advanced Settings

Latency: 1.33 ms (64)  Safe Mode

Sample Rate: 48000 Hz  Follow DoP detection

Inputs: 40

Outputs: 16

3.0.0 RC1 Build47246

Unite Settings for Anubis\_610087

Please select which of the Device I/O channels you wish mapping to the VAD I/O channels

VAD Input Maps

- Physical Inputs
- Built-In Mic
- Bus Returns
- Peered Inputs

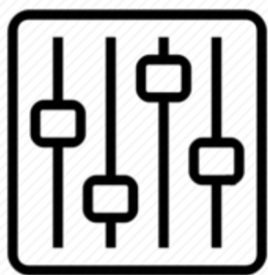
VAD Output Maps

- DAW
- AUX 1
- AUX 2
- AUX 3
- AUX 4
- AUX 5
- Additional Inputs

Unite Cancel

MENU ANUBIS 610087 Ex M 48.0 kHz

The screenshot displays a digital audio workstation interface for the Anubis 610087. It features a mixer with 16 channels. Each channel includes a gain knob at the top, a solo/mute button, and a name at the bottom. The channels are: MIC 1, MIC 2, PEDAL 3, LINE 2, ADA 4: 1, ADA 4: 2, ADA 4: 3, ADA 4: 4, ADA 4: 5, ADA 4: 6, ADA 4: 7, ADA 4: 8, REV, DYN, DAW, AUX1, AUX2, AUX3, AUX4, AUX5, CUE1, CUE2, CUE3, and MAIN OUT. The interface also shows various control buttons like SOLO, MUTE, C > M, TALK, and MIX-A on the right side.



<http://wiki.homerecz.com>

From:  
<https://wiki.homerecz.com/> -

Last update: **2025/04/07**

: (admin@homerecz.com)