



<http://wiki.homerecz.com>



..... 1

..... 1

..... 1

..... 1

**DIGI 96/8 PAD** ..... 5

..... 5

..... 5

..... 6

..... 6

..... 7

..... 7

..... 8

..... 8

..... 8

..... 8

..... 8

..... 9

..... 9

..... 11

..... 11

..... 11

..... 11



# DIGI 96/8 PAD

RME DIGI 96

가

1996

Hammerfall

PCI ADAT

RME Audio

(SOS 1999 9 )

Steinberg

. RME SEKD(PRODIF )

, Hammerfall DIGI 96/8 PST

5

DIGI 96

S/PDIF

DIGI 96

. 96/8

S/PDIF 8

ADAT

가 , 96/8 PRO

AES-EBU

XLR

가

. 96/8 PST

XLR

, DIGI 96/8 PAD

ADAT

가

, XLR AES-EBU

, 24 /96kHz

S/PDIF

, S/PDIF 8

DIGI 96/8 PAD

5.5

PCI

가

2 Toslink

9 D

9

AES-EBU

XLR

가

LED가

가

가

. CD-ROM

DIGI

-10dBV +4dBu

-10dBV

, 가 0dBFS

+19dBu

WCM( )

2

3

- : 2 , , +4dBu/-10dBV( 가 ).
- : 2 , , +10/+4/-2/-8dBu( ).
- **A-D** : AKM AK5383, 24 , - .
- **D-A** : Analog Devices AD1852, 24 .
- : 109dBA, 112dBA.
- + : <0.001%.
- : 5Hz ~ 44.8kHz, ±0.5dB, 96kHz .
- : > 110dB.
- : Toslink , , **XLR AES-EBU**.
- **S/PDIF** : <1nS PLL (44.1kHz, ).
- **ADAT** : <2nS PLL (44.1kHz, ).
- : 16, 20, 24.
- : 32, 44.1, 48, 64, 88.2, 96kHz 가 ( ).

DIGI 96 Windows 95/98 NT 4.0 Windows 2000, Mac OS,  
 Linux, Unix Solaris .  
 가 , 가 .  
 Windows 98SE **PC** 4.96 .

DIGI 96 .

DIGI 가

Windows 95/98 MME,  
 DirectSound, **ASIO 2.0** GSIF . Windows **ADAT** 4  
 . 8 . **ADAT**  
 가 2 .  
 I/O , **ADAT** **S/PDIF**  
 , SyncAlign  
 , **XLR**  
 LED  
 ' **ADAT** ' 가  
 44.1kHz 48kHz

3가

가

Samplitude

I/O

ASIO 2.0

....

ADAT

D-A

, S/PDIF

1 2

/ 가

4

가

가

72dB

ADAT

ADAT

4

S/PDIF-ADAT

4

NT

2000

).

A/S Conv

ADAT

S/PDIF

ADAT

S/PDIF

가

. RME

가

가

DIGI

WCM

....

A-D

AKM

가

M-Audio

Delta 1010

AK5383

D-A

Analog Devices AD1852

가

Echo Mia

D-A

가

. RME

Analog Devices AD1852가 Mia

AK4528

가

가

Mia

A-D

24

/44.1kHz

RMS

-109dB

24 /96kHz

M-Audio

Delta 1010

Delta

1010 가 -101dB

4 ASIO , 가 256 Cubase VST  
 44.1kHz 6mS . GSIF GigaStudio  
 가 RME  
 . DirectSound MME Pro 52  
 15mS .

가 . S/PDIF-ADAT , ,

. RME ,

DIGI 96/8 PAD £ 365

가 ADAT DAT 가 가  
 DSP 가

ADAT S/PDIF

DIGI 96 4 가  
 I/O가 ADAT

가 . DIGI 96 RME가 가  
 가 가

- 
- 
- 
- 
- CD-ROM

- DSP 가
- 22kHz 8

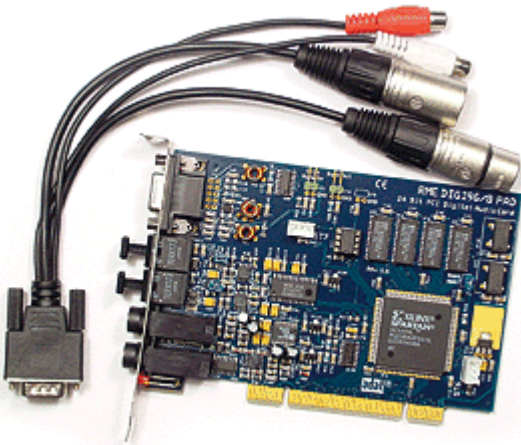
RME DIGI 96/8 PAD ADAT S/PDIF I/O가

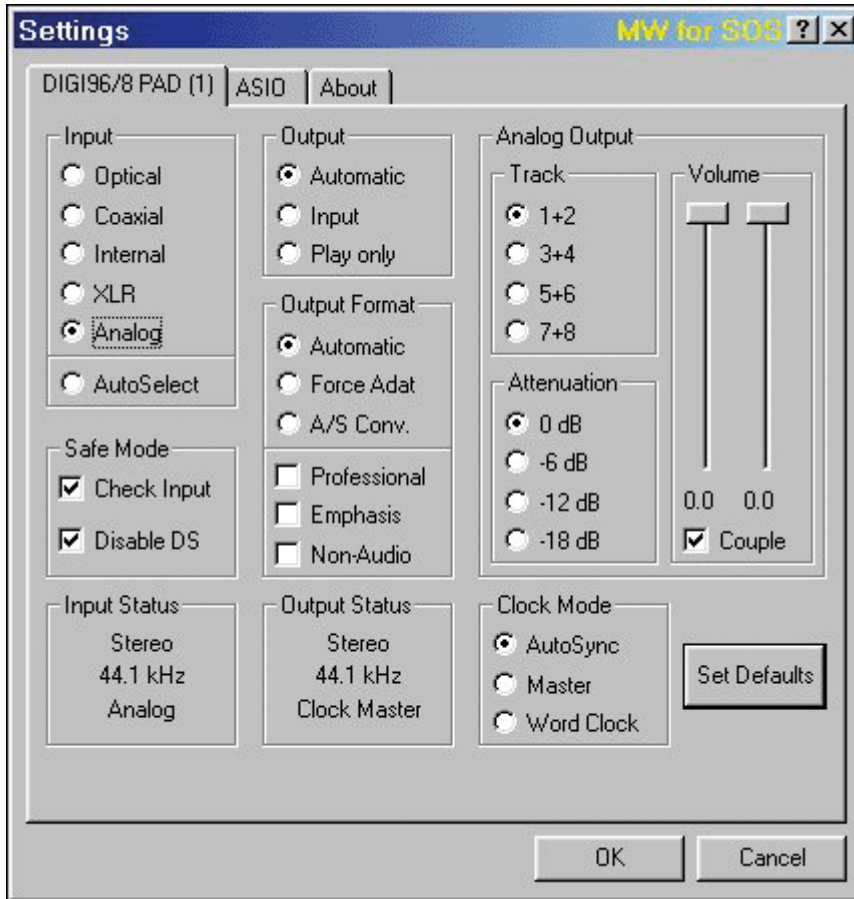


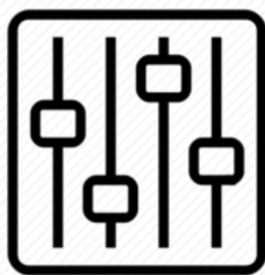
가

X-Vision UK +44 (0)1803 209239.

- 1GHz Pentium III Coppermine PC, 256Mb PC133 RAM, Windows 98SE
- : Intel 815EP Asus TUSL2C.
- : ATI Rage 128.
- : Echo Mia, Yamaha SW1000XG.
- : Cubase 5.0 r6, Wavelab 3.0, Sonar 1.02.
- <https://www.soundonsound.com/reviews/rme-digi-968-pad>







<http://wiki.homerecz.com>

From:  
<https://wiki.homerecz.com/> -

Last update: **2025/04/07**

: (admin@homerecz.com)