



<http://wiki.homerecz.com>

- 1
- 1
- 1
- 1
- 5
- 5
- Dante** 5
- Dante accelerator 7
- AVB** 8
- SoundGrid** 10
- RAVENNA** 13
- 16
- 16
- 16
- 16

PCIe, USB, Thunderbolt

1)

(Sync)

2)

가

ADAT

3)

AES/EBU

MADI

4)

가

가

(Aggregation)

가

가 . Focusrite RED, REDNET , Waves Digigrid ⁵⁾ , Yamaha
 NUAGE , Merging Ravenna , MOTU AVB

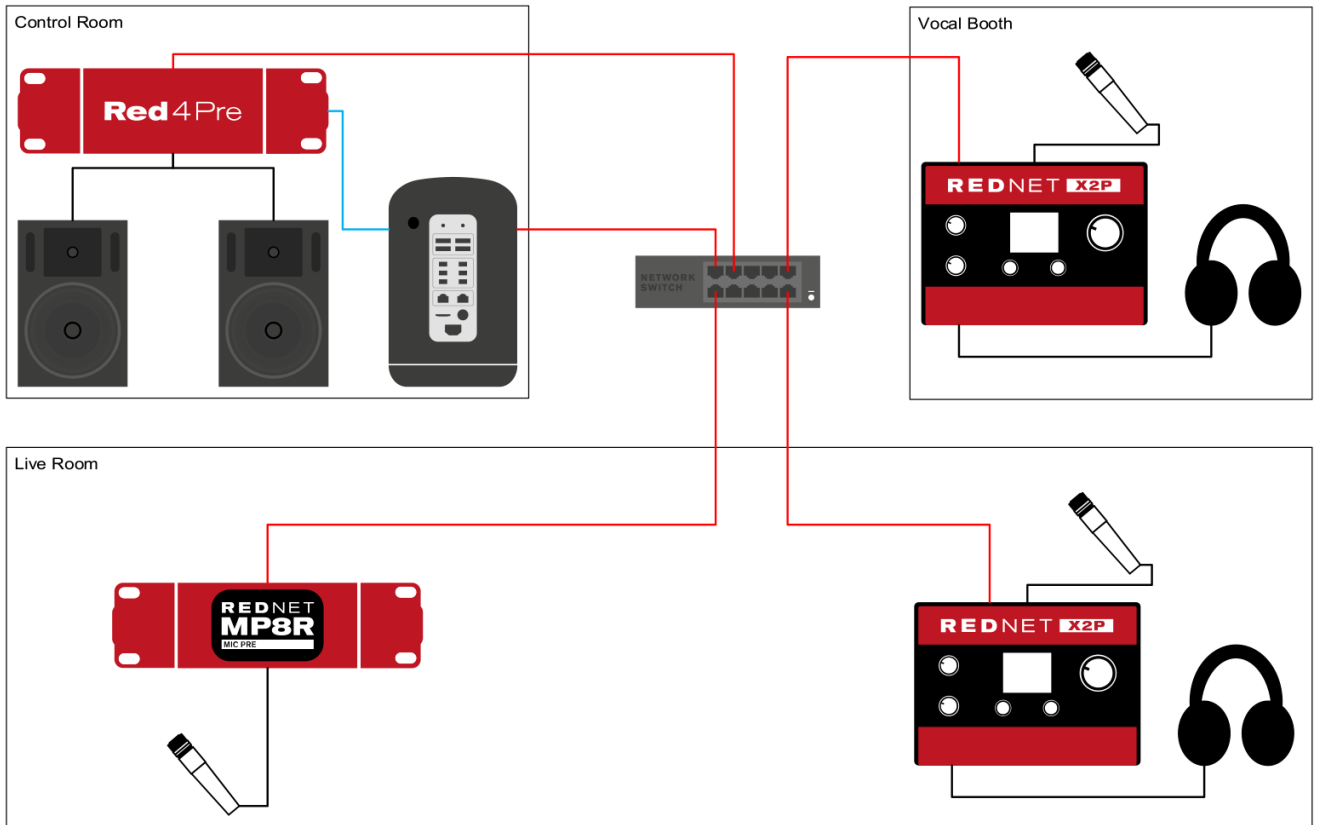
가

ASIO Multi-Client(

) ASIO Multi-Access(

)

Dante



- Key
- Network cable
 - Analogue
 - Thunderbolt
 - Fibre
 - AES3

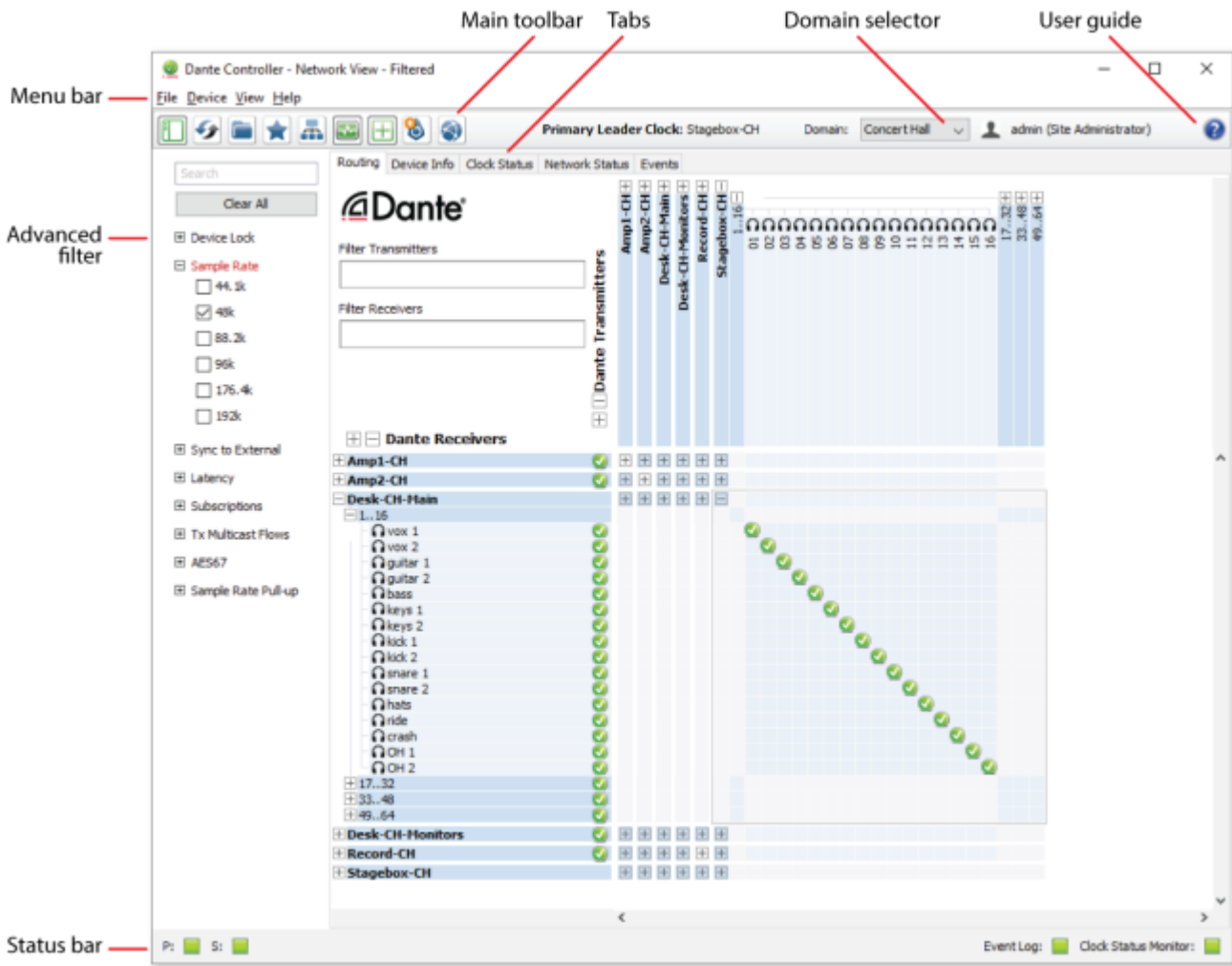
Dante 가 Dante



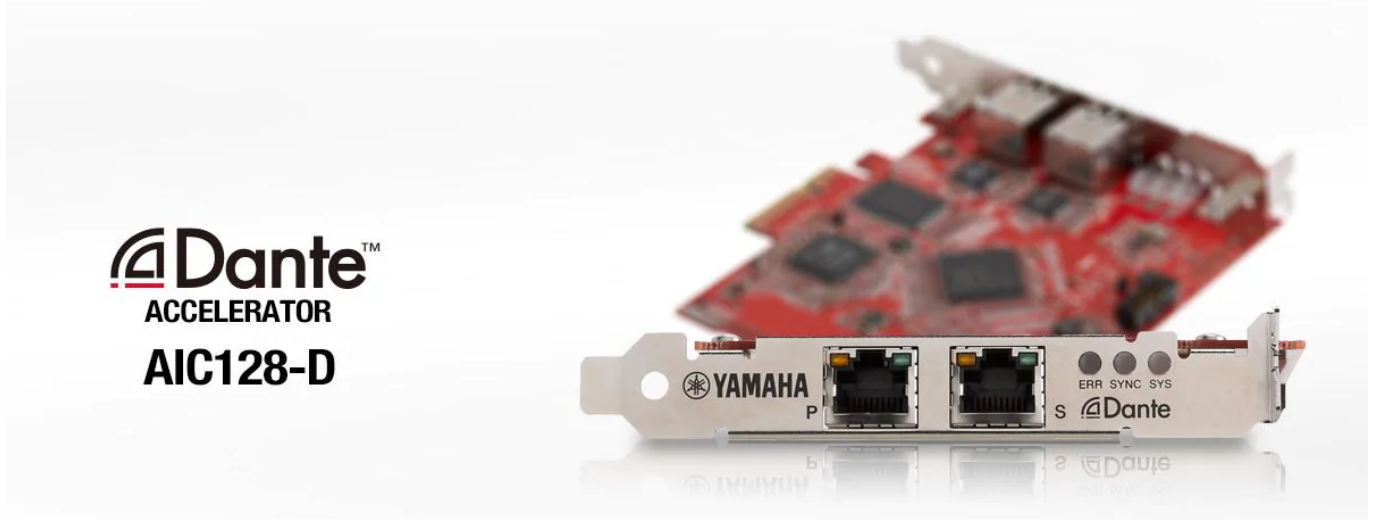
Yamaha, Focusrite가



/



Dante accelerator

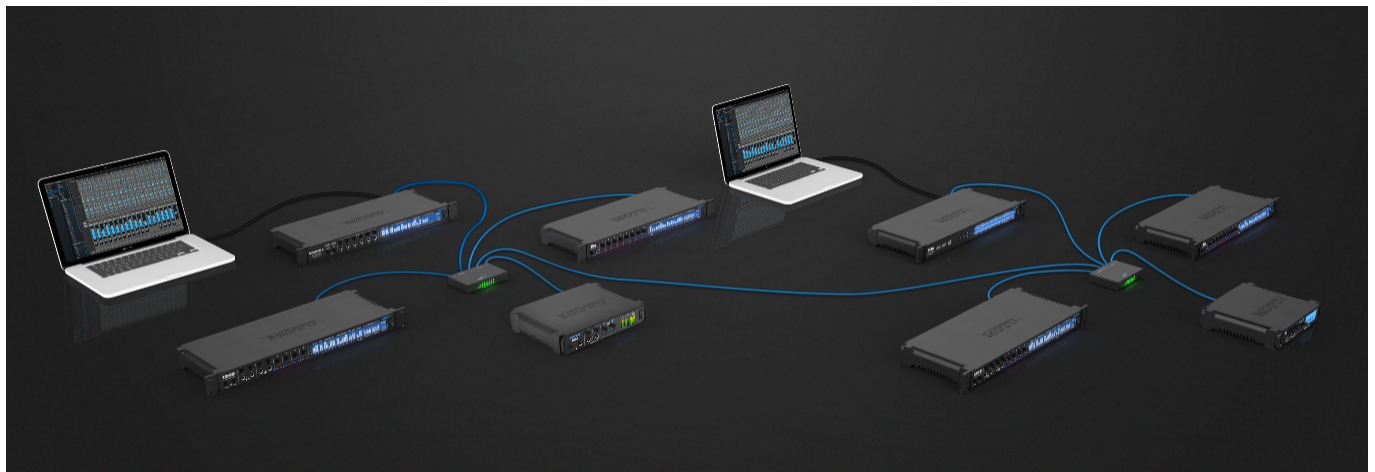


Dante () ,
 Dante accelerator가 , 가
 가 .

<https://kr.yamaha.com/ko/products/proaudio/interfaces/aic128-d/index.html>

AVB

AVB MOTU, Presonus, Avid 가 .



MOTU AVB AVB , , .

MOTU DSP 가 .



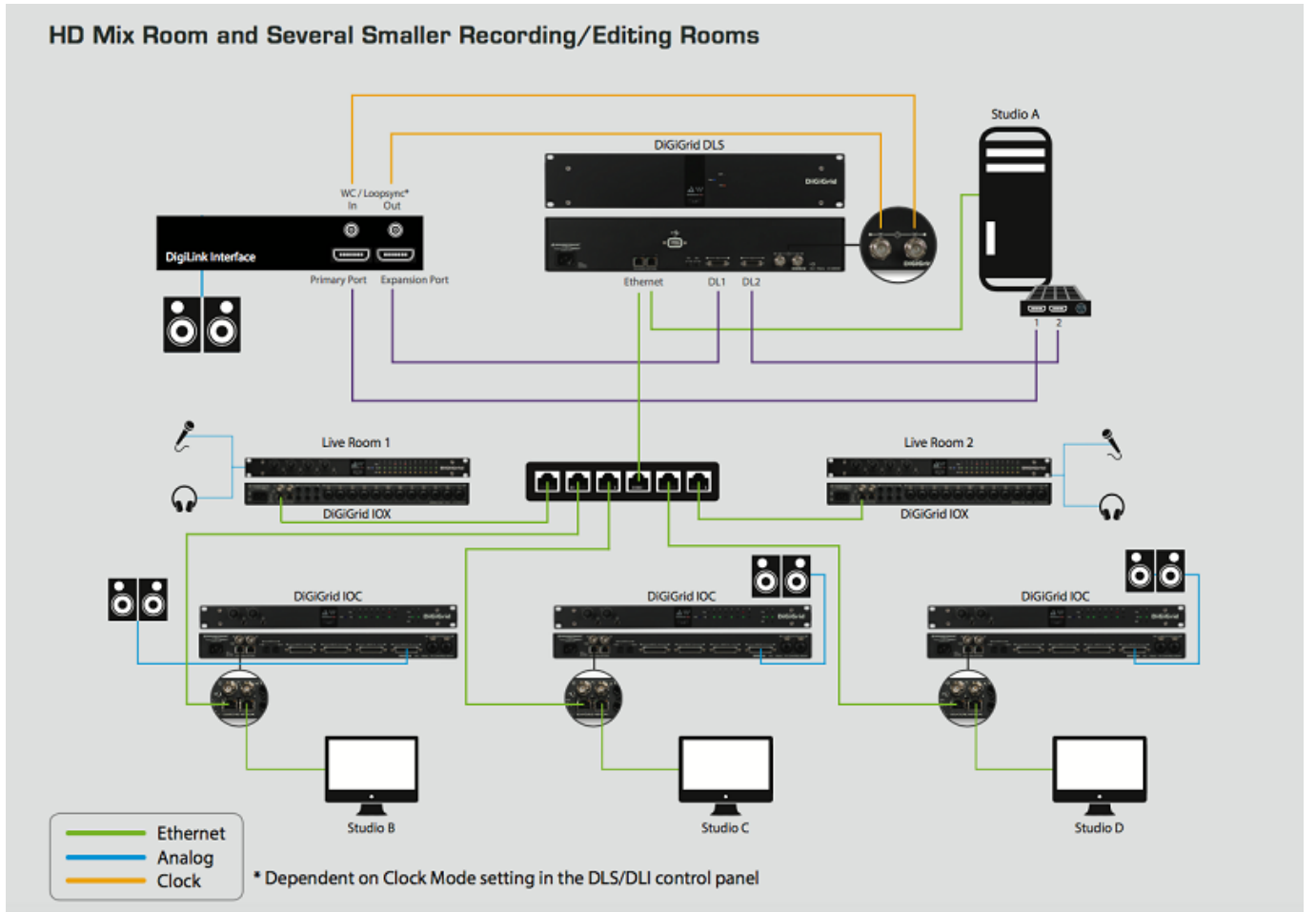
/

The screenshot shows the MOTU software interface with the 'Routing' tab selected. On the left, there are navigation buttons for 'Device', 'Routing', 'Mixing', and 'Aux Mixing'. Below these is a 'DEVICES' section with a '8M' indicator and a blue circular icon. The main area is a routing matrix with 'Output' and 'Source' columns. The 'Output' column lists 'Phones 1', 'Phones 2', 'Analog 1-8', 'ADAT A 1-8', and 'ADAT B 1-8'. The 'Source' column lists 'Mic Inst 1-8', 'ADAT A 1-8', and 'ADAT B 1-8'. The matrix shows blue squares indicating connections: ADAT B 1 to Mic Inst 1, ADAT B 2 to Mic Inst 2, ADAT B 3 to Mic Inst 3, ADAT B 4 to Mic Inst 4, ADAT B 5 to Mic Inst 5, ADAT B 6 to Mic Inst 6, ADAT B 7 to Mic Inst 7, ADAT B 8 to Mic Inst 8, ADAT A 1 to ADAT A 1, ADAT A 2 to ADAT A 2, ADAT A 3 to ADAT A 3, ADAT A 4 to ADAT A 4, ADAT A 5 to ADAT A 5, ADAT A 6 to ADAT A 6, ADAT A 7 to ADAT A 7, and ADAT A 8 to ADAT A 8.

AVB

가 AVB
가

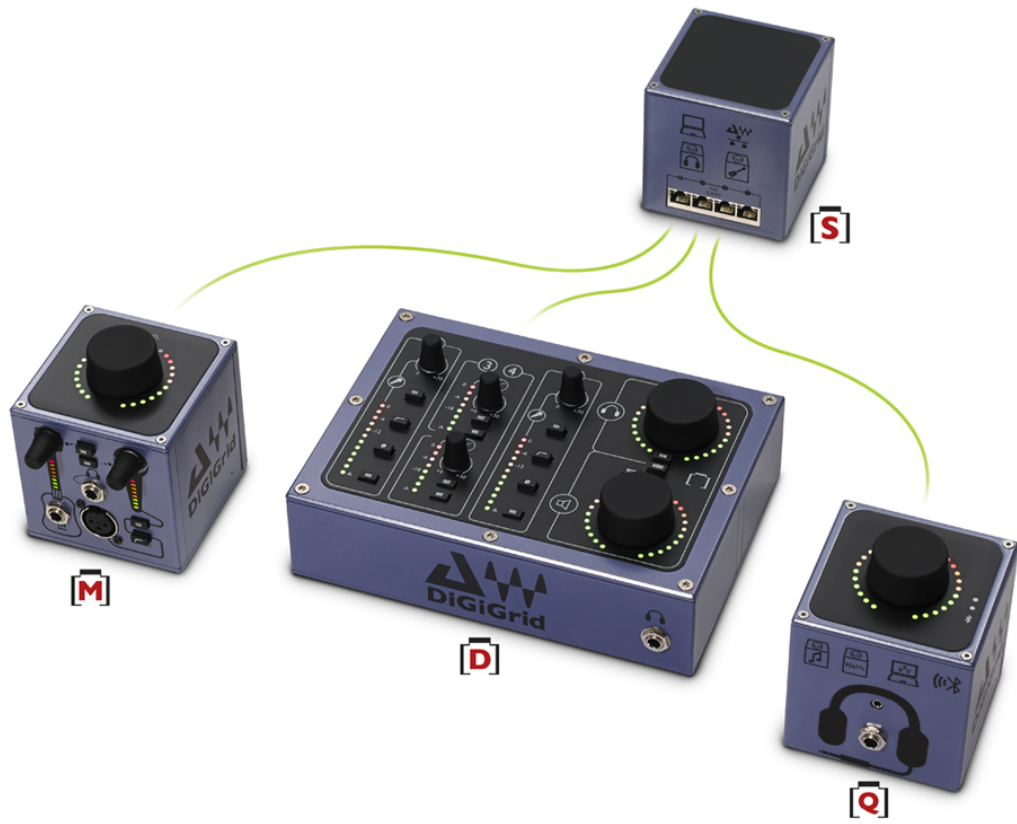
SoundGrid



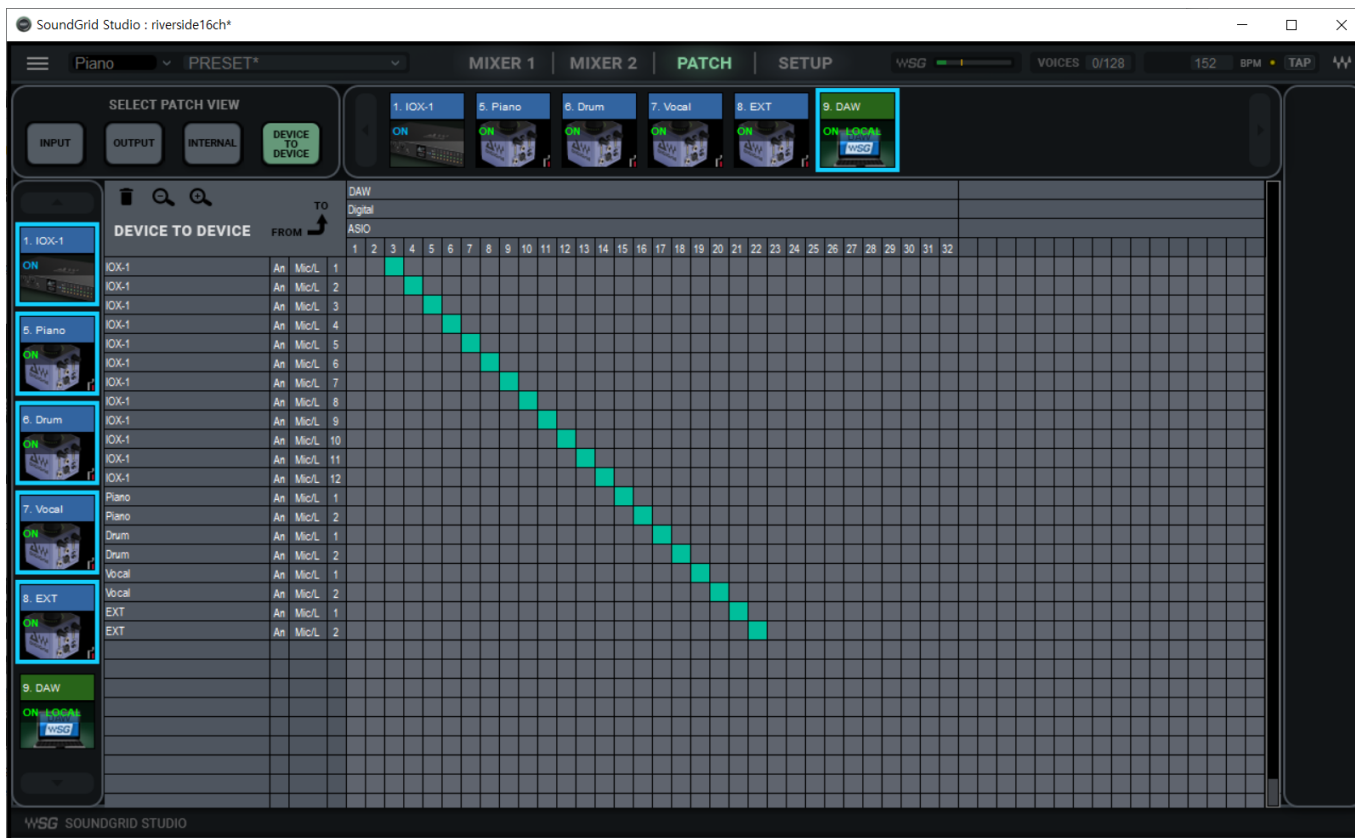
Waves SoundGrid

가

SoundGrid



Digigrd, Waves가



SoundGrid Waves Waves LV1 , Waves
 SoundGrid Studio , DSP .

RAVENNA

Merging (Hapi, Horus, Anubis) 가
 RAVENNA



PYRAMIX
ANUBIS

ANUBIS

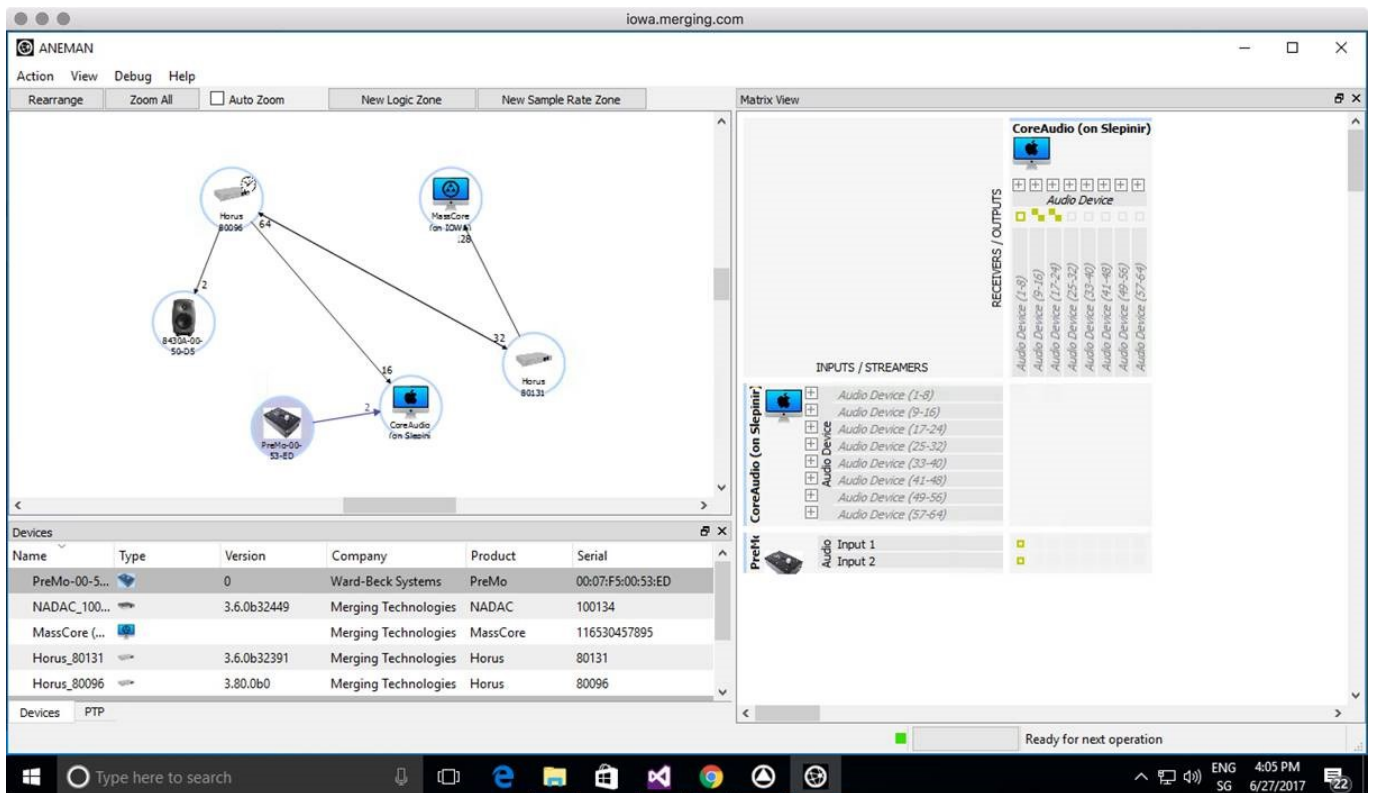
DAW
DSP

Merging

가

Merging

ANEMAN



1)

, , , ,

가

2)

Core Audio ASIO4ALL Aggregate device 가 ASIO

Core Audio ASIO4ALL

CPU

3)

8 8

4)

MADI

가

5)

Digico



<http://wiki.homerecz.com>

From:

<https://wiki.homerecz.com/> -

Last update: **2025/03/21**

: (admin@homerecz.com)