



<http://wiki.homerecz.com>

.....	1
.....	1
.....	1
.....	1
OPA1678	5
OPA167X	6
.....	7
.....	7
.....	7
.....	7

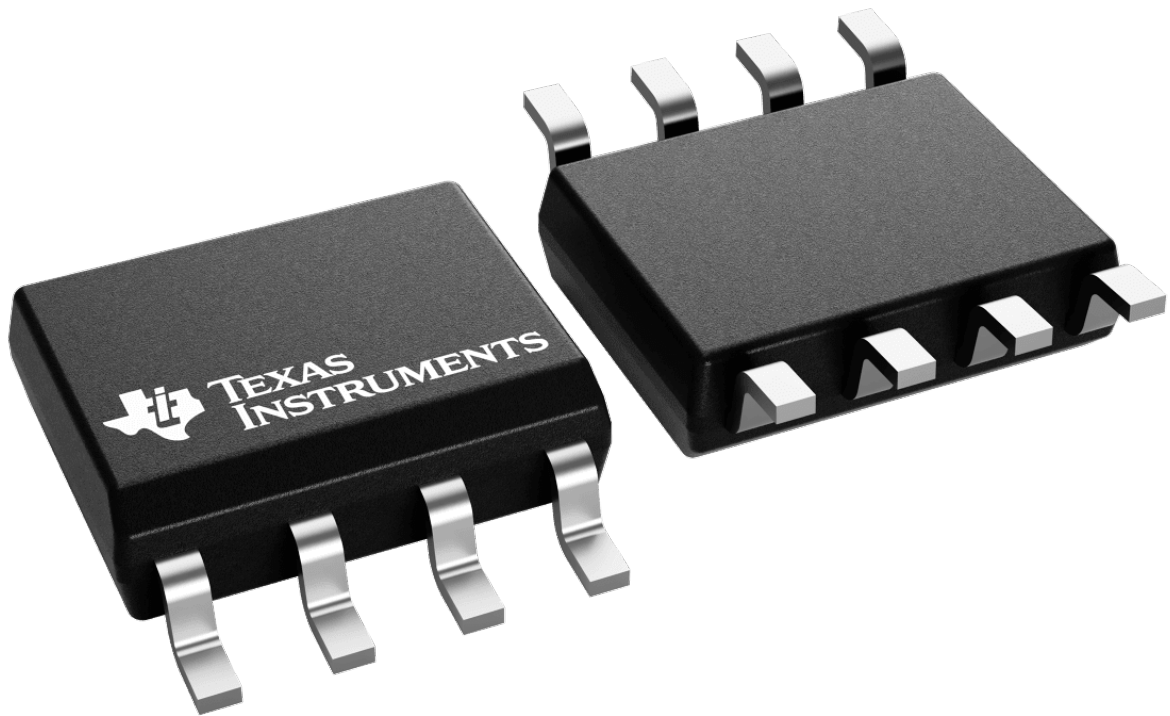
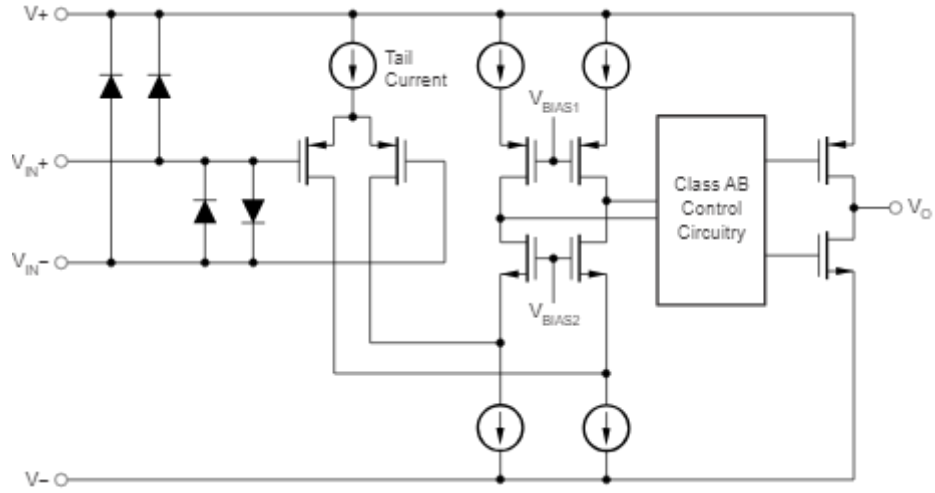
OPA1678

OPA1677(), OPA1678(), OPA1679()

OPA167x	4.5nV/√Hz	1kHz	0.0001%	
		2kΩ	800mV	- -
	가			
			OPA167x ±2.25V	±18V
	2mA			가

OPA167x

- Number of channels: 2
- Total supply voltage (+5V=5, ±5V=10)(min): 4.5V
- Total supply voltage (+5V=5, ±5V=10)(max): 36V
- **GBW**(typ): 16MHz
- **Slew rate**(typ): 9V/μs
- Rail-to-rail: Out
- Vos(offset voltage at 25°C)(max): 2mV
- Iq per channel(typ): 2mA
- Vn at 1kHz(typ): 4.5nV/√Hz
- Features: Small Size
- **THD+N** at 1kHz(typ): 0.0001%
- Rating: Catalog
- Operating temperature range: -40~85°C
- Iout (typ): 0.05A
- Architecture: CMOS
- **CMRR** (typ): 110dB



OPA167X

- Black Lion Audio - Auteur Series



<http://wiki.homerecz.com>

From:

<https://wiki.homerecz.com/> -

Last update: **2025/03/17**

: (admin@homerecz.com)