



<http://wiki.homerecz.com>

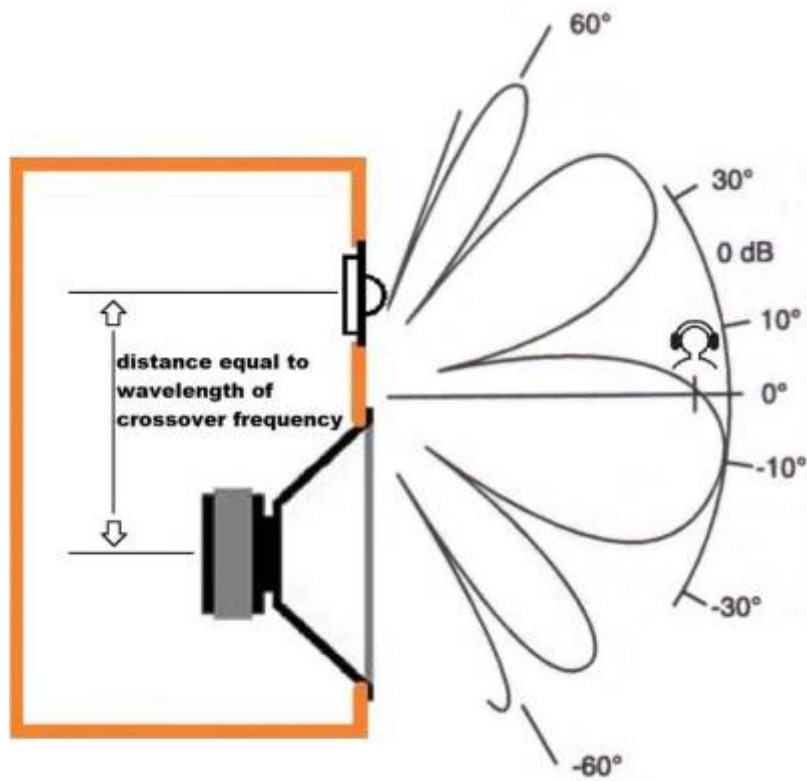


---

.....	1
.....	1
.....	1
.....	1
.....	5
.....	5
<b>Reference</b> .....	8
.....	9
.....	9
.....	9
.....	9







2 way system with 3rd order crossover

(Lobing error)가

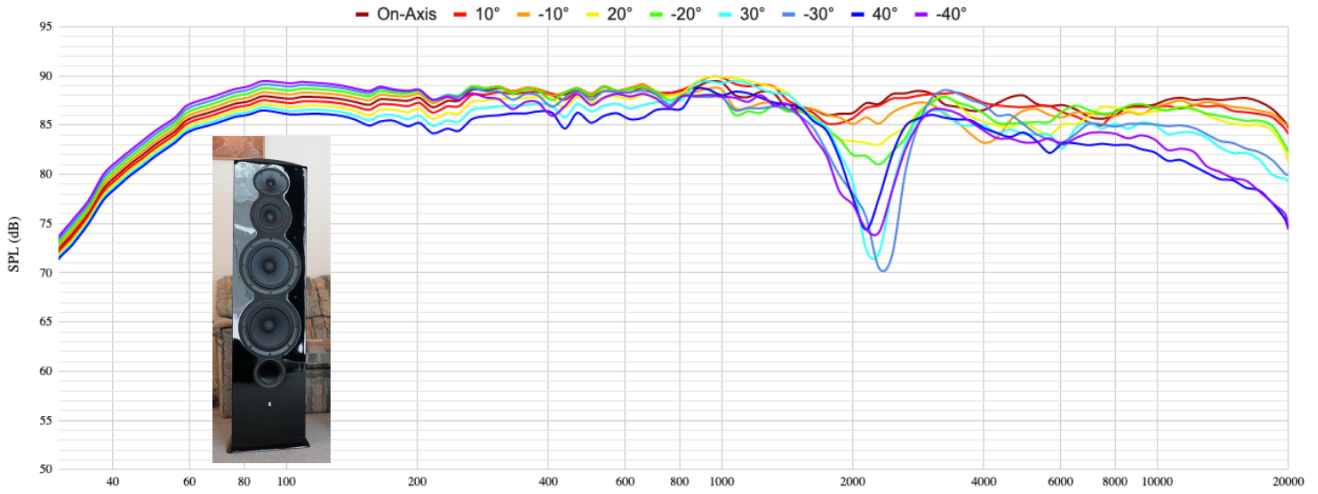
- 가 2kHz( : 17cm) , 가  
17/4cm

(lobe)

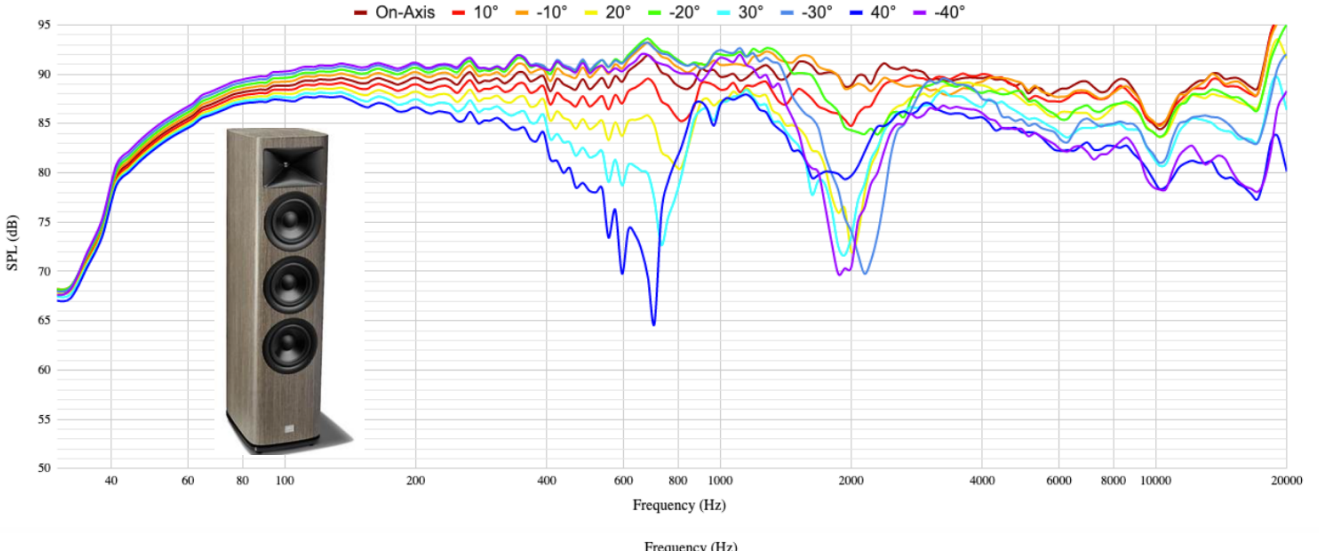
- 80Hz 80Hz 4.25m . 4.25/4m

- 1) 가 , 2) 가  
, 3)

### Vertical Directivity

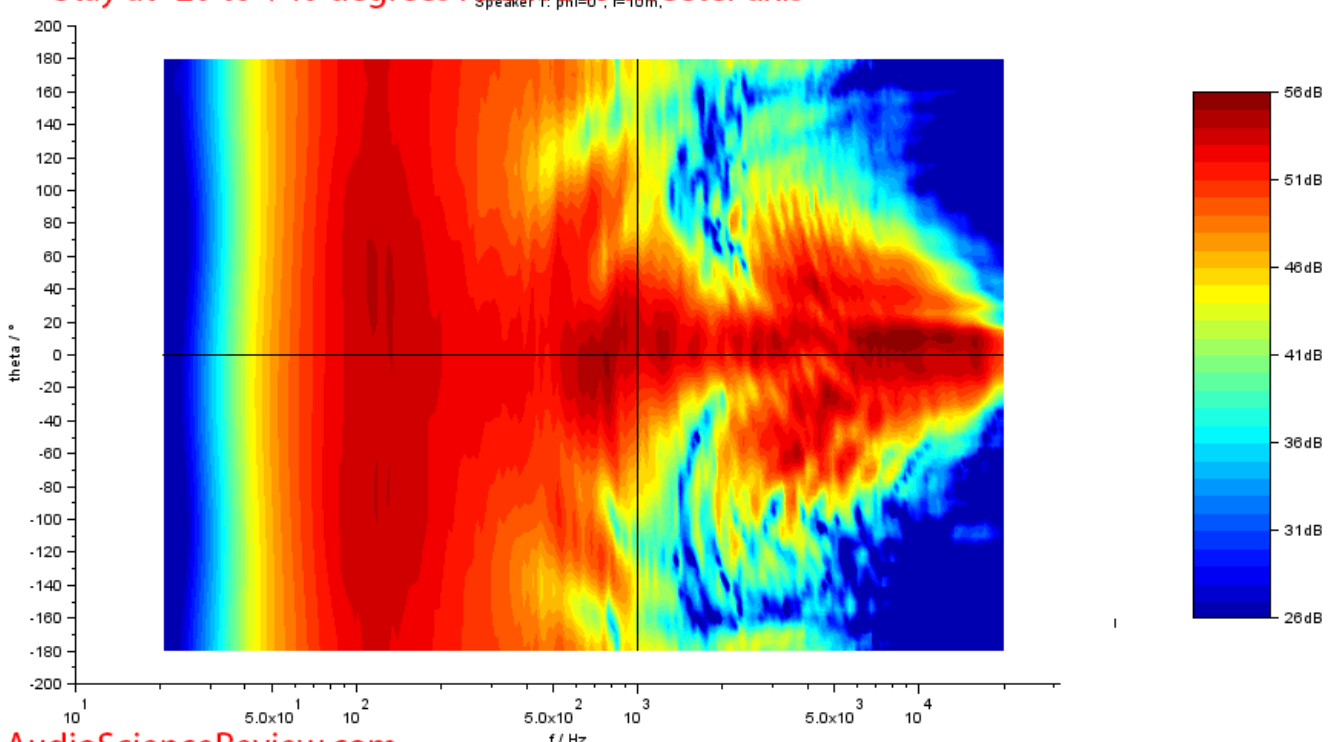


### Vertical Directivity

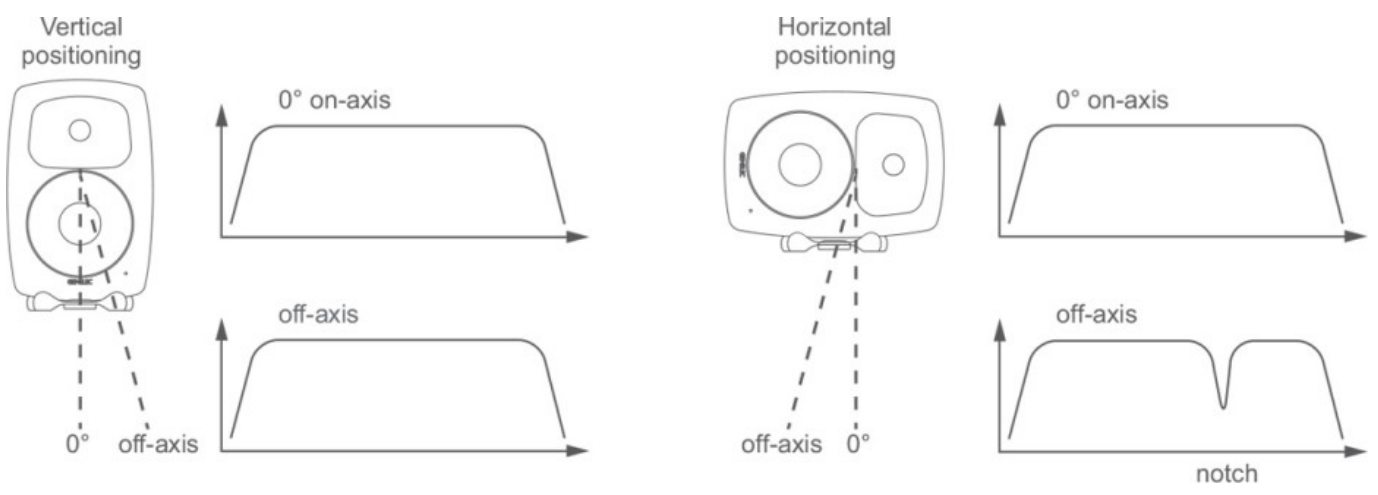


# Dynaudio X14 Vertical Directivity

Stay at -20 to +40 degrees relative to tweeter axis



AudioScienceReview.com



## Reference

- [https://en.wikipedia.org/wiki/Acoustic\\_lobing](https://en.wikipedia.org/wiki/Acoustic_lobing)
- <https://purifi-audio.com/blog/tech-notes-1/time-phase-alignment-acoustic-center-lobing-etc-14>





<http://wiki.homerecz.com>

From:

<https://wiki.homerecz.com/> -

Last update: **2025/04/02**

: (admin@homerecz.com)