



<http://wiki.homerecz.com>



..... 1

..... 1

..... 1

..... 1

..... 5

**Shepard tone** ..... 6

..... 7

..... 7

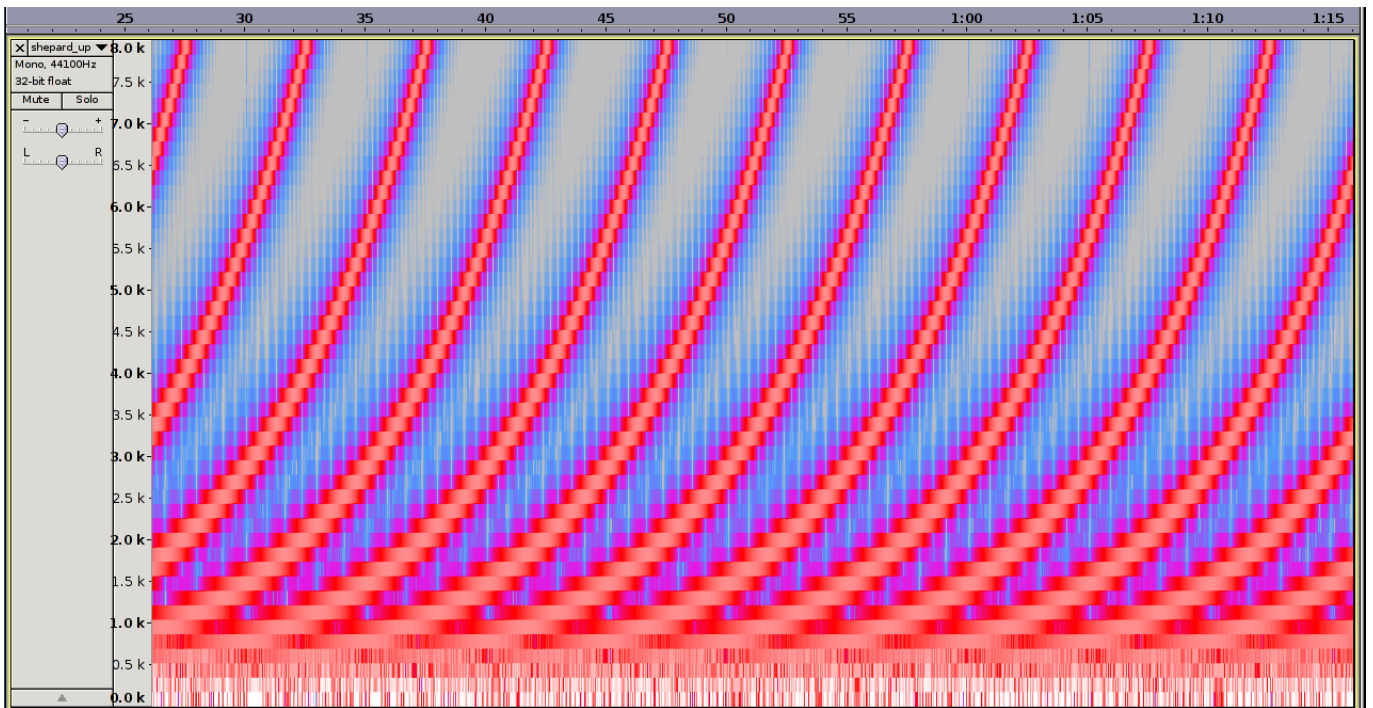
..... 7

..... 7



가 가 , 가 가 가 가 가 가 가

### Shepard tone





## Video

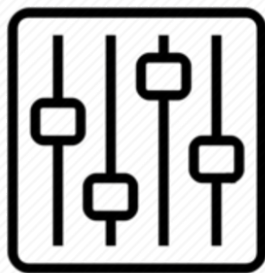
# Shepard tone

The Shepard tone is a phenomenon in audio or music that deceives the human auditory system. It refers to a sequence of audio that sounds like it is continually ascending or descending endlessly.

The Shepard tone typically has the characteristic of the spectrum increasing or decreasing across multiple octaves at a constant ratio. This creates the perception that the scale is continuously rising or falling. However, in reality, the pitch of the sound remains constant.

The Shepard tone is based on how the human auditory system perceives continuously rising or falling sounds. Our auditory system interprets the sound as ascending or descending while the pitch remains constant.

The Shepard tone is often used in film music and sound effects to provide a sense of constant tension or to enhance perceptual effects. Additionally, it is utilized in psychological experiments to study human perception and cognition.



<http://wiki.homerecz.com>

From:  
<https://wiki.homerecz.com/> -

Last update: **2025/01/20**

: (admin@homerecz.com)